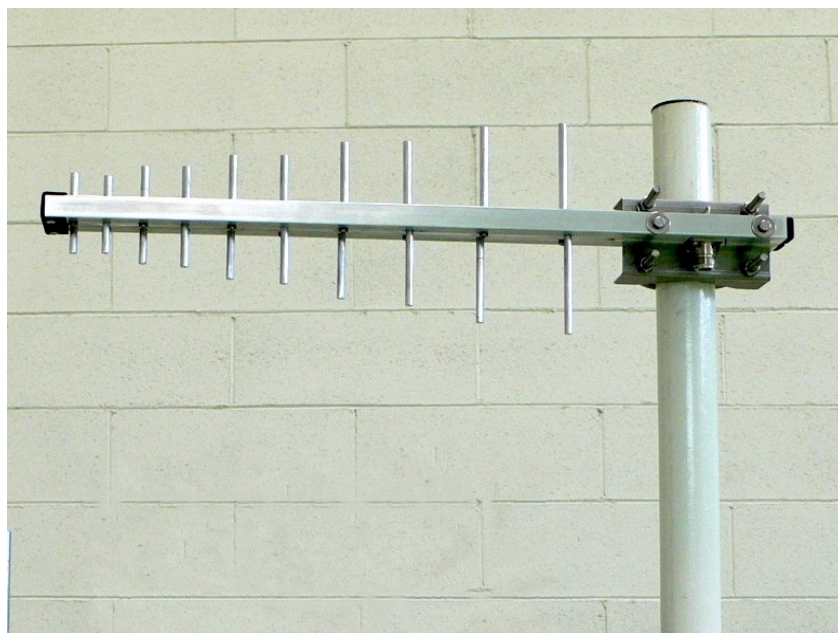


# LL3115V

*ElettroMagnetic Services*  
SRL

## LOGARITHMIC ANTENNA

- Broadband and compact design
- Stainless steel bracket and hardware
- Customization available



### ELECTRICAL

Frequency	960 ÷ 2200 MHz
Polarization	linear vertical
VSWR	< 2 across band
Gain	7 ÷ 9.5 dBi
Front-to-back ratio	> 14 dB
Half power beamwidth	80° (Az) × 60° (El)
Power rating	100 W cw
Lightning protection	DC grounded

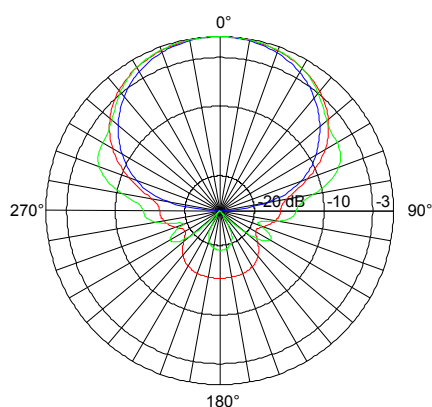
### MECHANICAL

Connector	N-female, 50 Ω
Boom × element lenght	450 × 150 mm
Mass	550 g
Wind loading	3 kg @ 150 km/h
Standard finish	anticorodal aluminium, stainless steel hardware

### MOUNTING

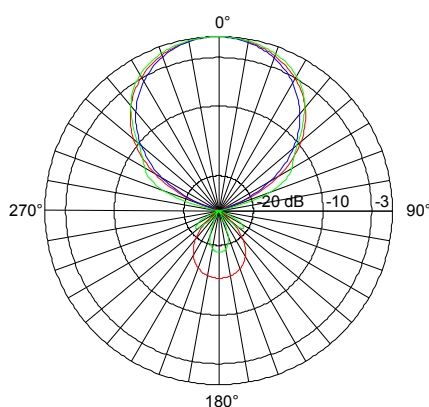
Standard interface	rear bracket
Mast diameter range	40 ÷ 60 mm

Azimuth pattern



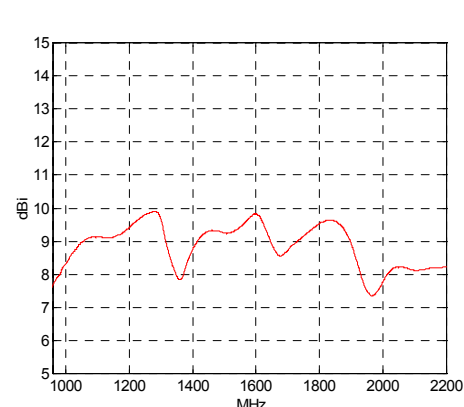
(frequency band start/mid/end)

Elevation pattern



(frequency band start/mid/end)

Gain



Due to technical improvements, specifications provided in this data sheet may change without notice.  
Whilst every effort is made to ensure an high degree of accuracy to all specifications here reported, no responsibility can be accepted for any errors or omissions.  
Any reproduction, full or partial, of this document and its contents is not allowed without factory authorization.

Since **ElettroMagnetic Services** is specialized in development and production of custom antennas, if you need electrical and/or mechanical modifications of this product to meet a particular application or requirements, please feel free to contact us directly.

### HEADQUARTERS

**ElettroMagnetic Services srl**  
via S. Pertini, 6  
26019 VAILATE (CR) - ITALY  
Tel +39 (0) 363 84086  
Fax +39 (0) 363 341636  
Email [info@elettromagneticservices.com](mailto:info@elettromagneticservices.com)

Issued: 20.03.07  
Updated: 27.10.16