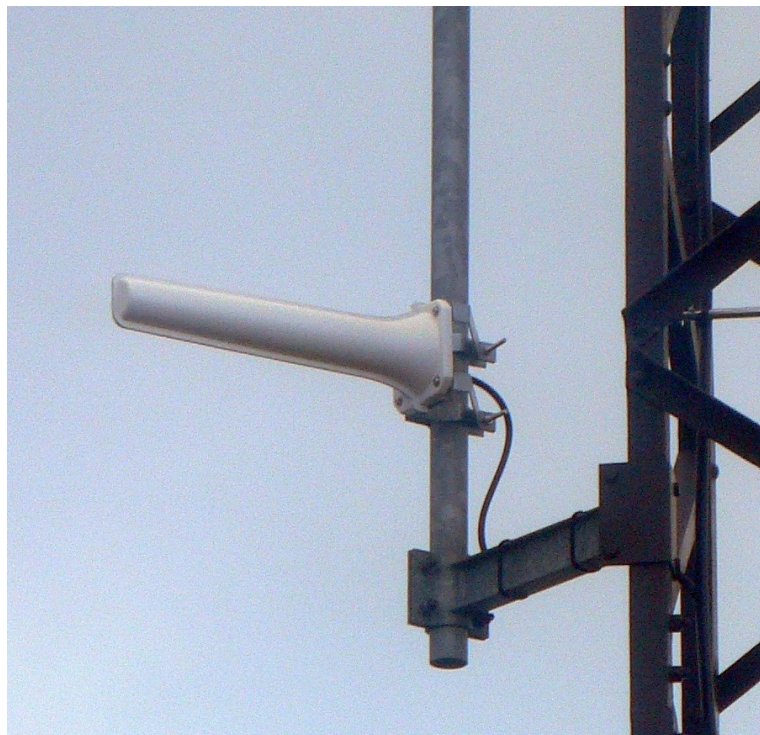


LY12L

ElettroMagnetic Services
SRL

YAGI DIRECTIONAL ANTENNA

- For point to point connections, 15.5 dBi gain
- Full radome protection
- Customization available



ELECTRICAL

Frequency	2360 ÷ 2485 MHz
Polarization	linear, horizontal or vertical
VSWR	< 1.5 across band
Gain	15.5 dBi
Front-to-back ratio	> 25 dB
Half power beamwidth	26° (E-plane) × 28° (H-plane)
Power rating	100 W cw
Lightning protection	DC grounded

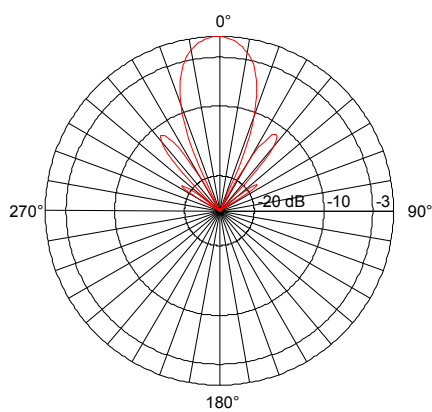
MECHANICAL

Connector	N-female, 50 Ω
Dimensions	565(L) × 160(W) mm
Mass	2400 g
Wind loading	12 kg @ 150 km/h
Standard finish	white plastic radome and anod. aluminium reflector

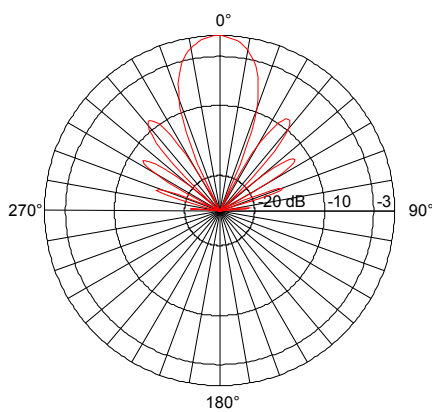
MOUNTING

Standard interface	rear bracket
Mast diameter range	40 ÷ 100 mm

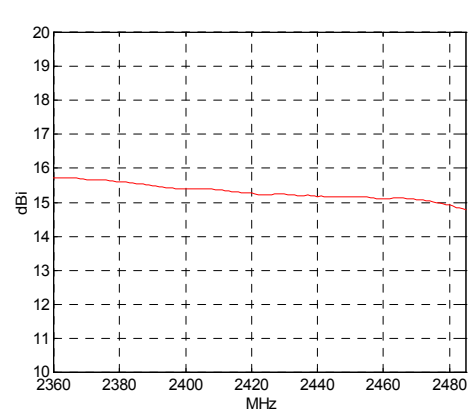
E-plane pattern



H-plane pattern



Gain curve



Due to technical improvements, specifications provided in this data sheet may change without notice.
Whilst every effort is made to ensure an high degree of accuracy to all specifications here reported, no responsibility can be accepted for any errors or omissions.
Any reproduction, full or partial, of this document and its contents is not allowed without factory authorization.

Since **ElettroMagnetic Services** is specialized in development and production of custom antennas, if you need electrical and/or mechanical modifications of this product to meet a particular application or requirements, please feel free to contact us directly.

HEADQUARTERS

ElettroMagnetic Services srl
via S. Pertini, 6
26019 VAILATE (CR) - ITALY
Tel +39 (0) 363 84086
Fax +39 (0) 363 341636
Email info@elettromagneticservices.com

Issued: 30.01.06
Updated: 03.11.16