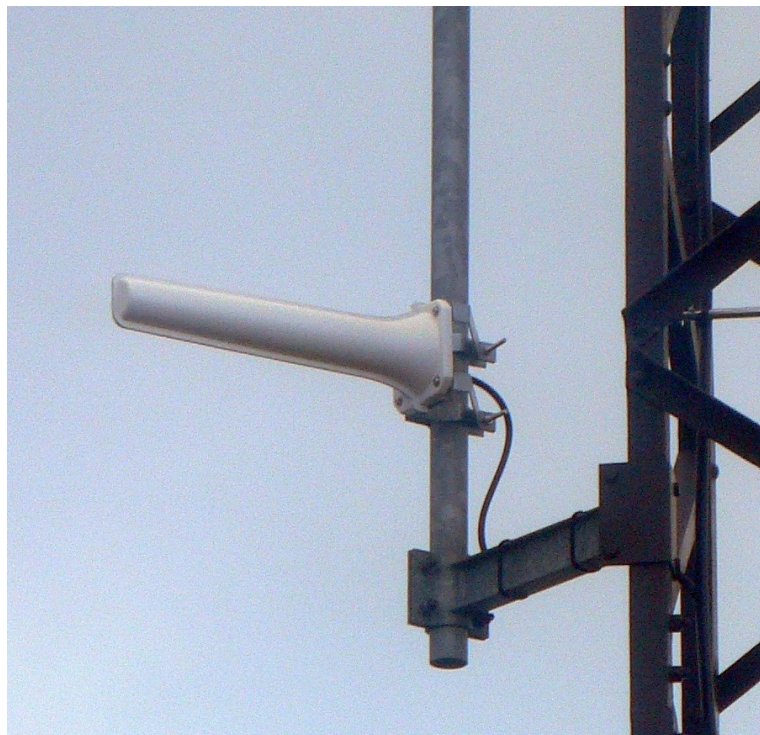


# LY18L

*ElettroMagnetic Services*  
SRL

## YAGI DIRECTIONAL ANTENNA

- For point to point connections, 14.5 dBi gain
- Full radome protection
- Customization available



### ELECTRICAL

Frequency	1635 ÷ 1735 MHz
Polarization	linear, horizontal or vertical
VSWR	< 1.5 across band
Gain	14.5 dBi
Front-to-back ratio	> 25 dB
Half power beamwidth	26° (E-plane) × 30° (H-plane)
Power rating	100 W cw
Lightning protection	DC grounded

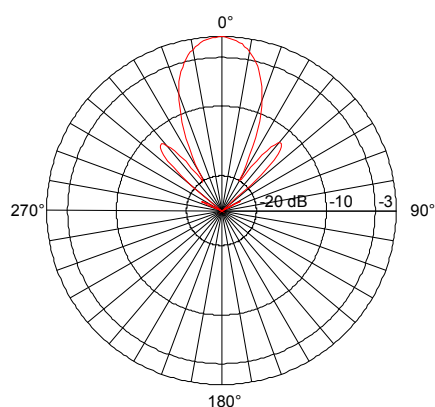
### MECHANICAL

Connector	N-female, 50 Ω
Dimensions	565(L) × 160(W) mm
Mass	2400 g
Wind loading	12 kg @ 150 km/h
Standard finish	white plastic radome and anod. aluminium reflector

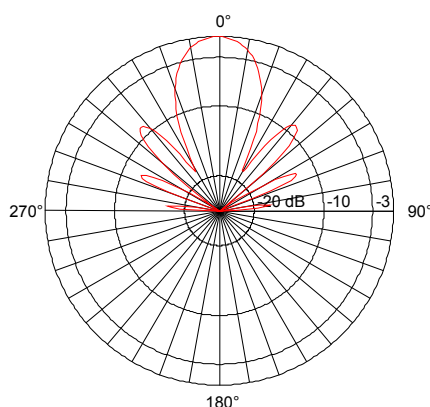
### MOUNTING

Standard interface	rear bracket
Mast diameter range	40 ÷ 100 mm

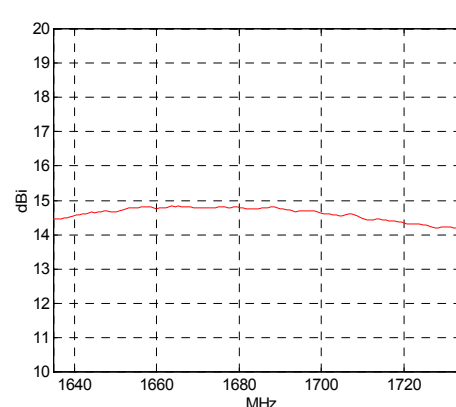
E-plane pattern



H-plane pattern



Gain curve



Due to technical improvements, specifications provided in this data sheet may change without notice. Whilst every effort is made to ensure an high degree of accuracy to all specifications here reported, no responsibility can be accepted for any errors or omissions. Any reproduction, full or partial, of this document and its contents is not allowed without factory authorization.

Since **ElettroMagnetic Services** is specialized in development and production of custom antennas, if you need electrical and/or mechanical modifications of this product to meet a particular application or requirements, please feel free to contact us directly.

### HEADQUARTERS

**ElettroMagnetic Services srl**  
via S. Pertini, 6  
26019 VAILATE (CR) - ITALY  
Tel +39 (0) 363 84086  
Fax +39 (0)363 341636  
Email [info@elettromagneticservices.com](mailto:info@elettromagneticservices.com)

Issued: 26.01.06  
Updated: 03.11.16