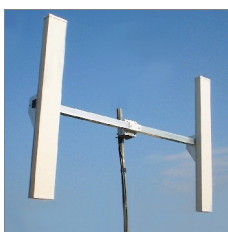


SP11V15

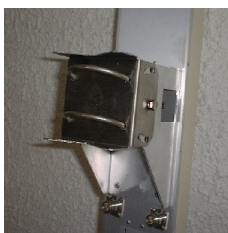
ElettroMagnetic Services
SRL

SECTOR PANEL 120°

- For point to multipoint connections, broadband, 14.5 dBi gain
- Tilttable stainless steel bracket and hardware
- Customization available



Mounting hardware for two antennas in diversity (available as option)



Tilttable stainless steel rear bracket

ELECTRICAL

Frequency	2400 ÷ 2700 MHz
Polarization	linear vertical
VSWR	< 1.5 across band
Gain	14.5 dBi
Front-to-back ratio	> 23 dB
Half power beamwidth	120° (Az) × 7° (El)
Power rating	20 W cw
Lightning protection	DC grounded

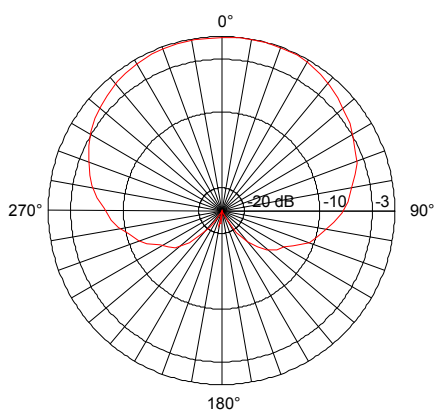
MECHANICAL

Connector	N-female, 50 Ω
Dimensions	105(W)×845(H)×45(D) mm
Mass	1650 g
Wind loading	12 kg @ 150 km/h
Standard finish	white plastic radome and anod. aluminium reflector

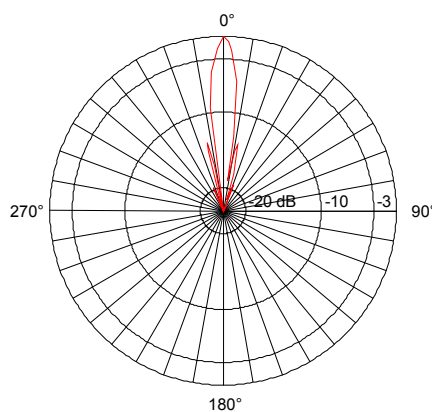
MOUNTING

Standard interface	tiltable rear bracket
Mast diameter range	40 ÷ 60 mm

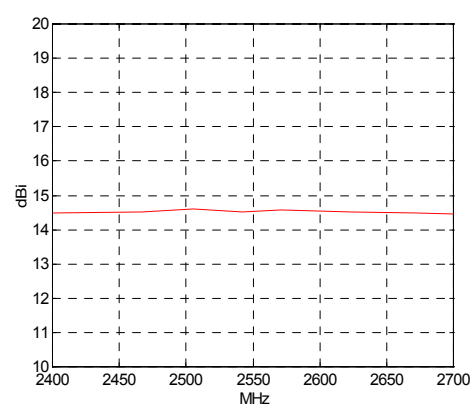
Azimuth pattern



Elevation pattern



Gain



Due to technical improvements, specifications provided in this data sheet may change without notice. Whilst every effort is made to ensure an high degree of accuracy to all specifications here reported, no responsibility can be accepted for any errors or omissions. Any reproduction, full or partial, of this document and its contents is not allowed without factory authorization.

Since **ElettroMagnetic Services** is specialized in development and production of custom antennas, if you need electrical and/or mechanical modifications of this product to meet your particular application or requirements, please feel free to contact us directly.

HEADQUARTERS

ElettroMagnetic Services srl
via S. Pertini, 6
26019 VAILATE (CR) - ITALY
Tel +39 (0) 363 84086
Fax +39 (0)363 341636
Email info@elettromagneticservices.com

Issued: 30.01.06
Updated: 26.10.16