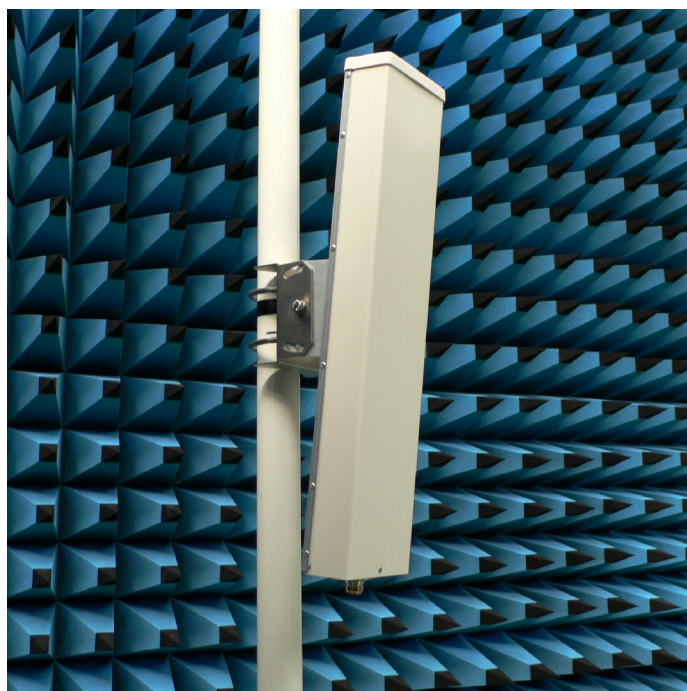


# SP12H

*ElettroMagnetic Services*  
SRL

## SECTOR PANEL 120°

- For point to multipoint connections, horizontally polarized, 12 dBi gain
- Tilttable stainless steel bracket and hardware
- Customization available



### ELECTRICAL

Frequency	2400 ÷ 2485 MHz (2350 ÷ 2500 MHz with 11 dBi gain)
Polarization	linear horizontal
VSWR	< 1.5 across band
Gain	12 dBi
Front-to-back ratio	> 20 dB
Half power beamwidth	120° (Az) × 15° (El)
Power rating	10 W cw
Lightning protection	DC grounded

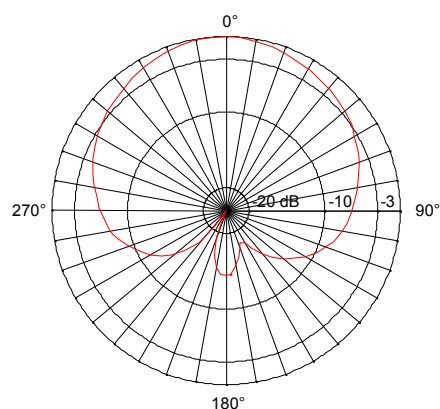
### MECHANICAL

Connector	N-female, 50 Ω
Dimensions	102(W)×442(H)×45(D) mm
Mass	950 g
Wind loading	6 kg @ 150 km/h
Standard finish	white plastic radome and anod. aluminium reflector

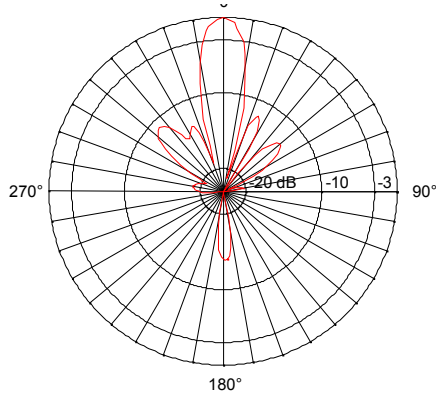
### MOUNTING

Standard interface	tiltable rear bracket
Mast diameter range	40 ÷ 60 mm

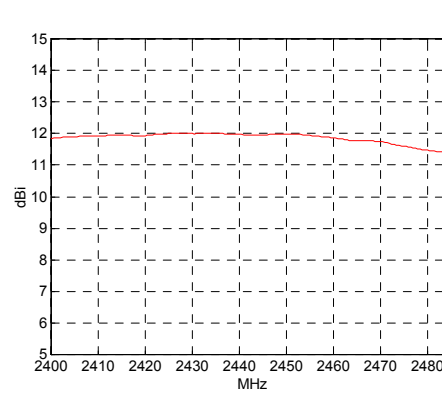
Azimuth pattern



Elevation pattern



Gain curve



Due to technical improvements, specifications provided in this data sheet may change without notice.  
Whilst every effort is made to ensure an high degree of accuracy to all specifications here reported, no responsibility can be accepted for any errors or omissions.  
Any reproduction, full or partial, of this document and its contents is not allowed without factory authorization.

Since **ElettroMagnetic Services** is specialized in development and production of custom antennas, if you need electrical and/or mechanical modifications of this product to meet your particular application or requirements, please feel free to contact us directly.

### HEADQUARTERS

**ElettroMagnetic Services srl**  
via S. Pertini, 6  
26019 VAILATE (CR) - ITALY  
Tel +39 (0) 363 84086  
Fax +39 (0)363 341636  
Email [info@elettromagneticservices.com](mailto:info@elettromagneticservices.com)

Issued: 17.05.11  
Updated: 02.09.16