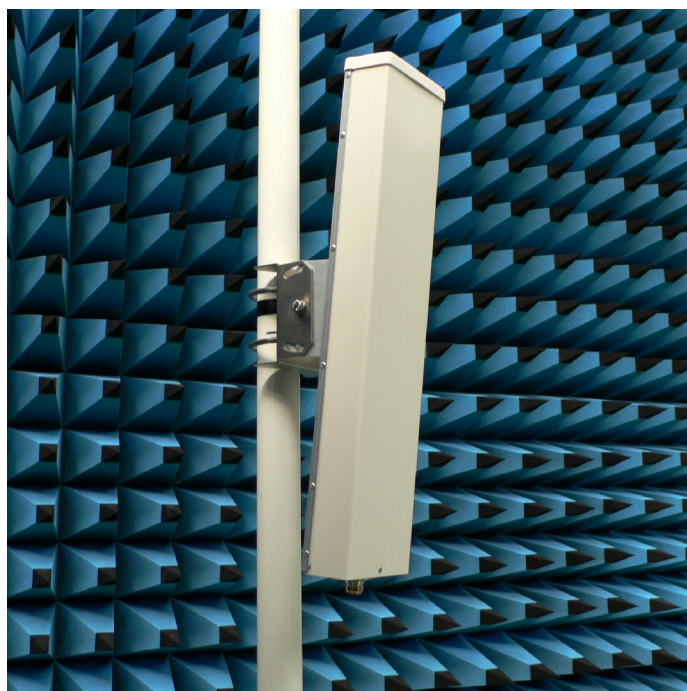


SP13V

ElettroMagnetic Services
SRL

SECTOR PANEL 115°

- For point to multipoint connections, 11.5 dBi gain
- Tilttable stainless steel bracket and hardware
- Customization available



ELECTRICAL

Frequency	2100 ÷ 2300 MHz
Polarization	linear vertical
VSWR	< 1.5 across band
Gain	11.5 dBi
Front-to-back ratio	> 20 dB
Half power beamwidth	115° (Az) × 15° (El)
Power rating	10 W cw
Lightning protection	DC grounded

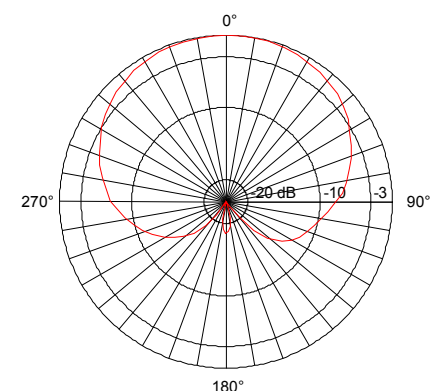
MECHANICAL

Connector	N-female, 50 Ω
Dimensions	102(W)×442(H)×45(D) mm
Mass	950 g
Wind loading	6 kg @ 150 km/h
Standard finish	white plastic radome and anod. aluminium reflector

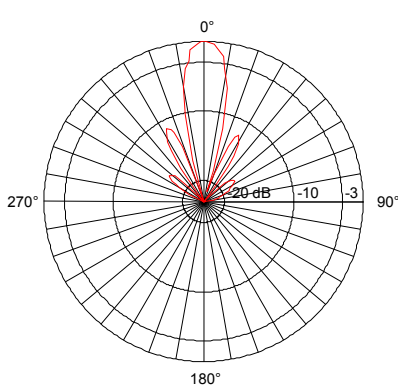
MOUNTING

Standard interface	tiltable rear bracket
Mast diameter range	40 ÷ 60 mm

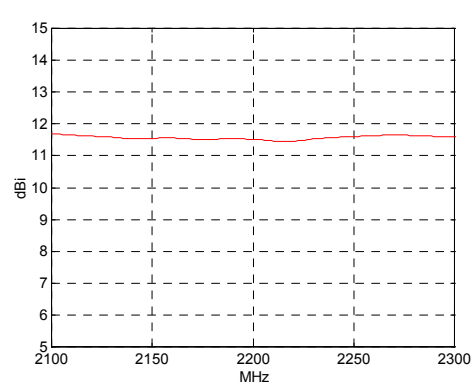
Azimuth pattern



Elevation pattern



Gain curve



Due to technical improvements, specifications provided in this data sheet may change without notice.
Whilst every effort is made to ensure an high degree of accuracy to all specifications here reported, no responsibility can be accepted for any errors or omissions.
Any reproduction, full or partial, of this document and its contents is not allowed without factory authorization.

Since **ElettroMagnetic Services** is specialized in development and production of custom antennas, if you need electrical and/or mechanical modifications of this product to meet your particular application or requirements, please feel free to contact us directly.

HEADQUARTERS

ElettroMagnetic Services srl
via S. Pertini, 6
26019 VAILATE (CR) - ITALY
Tel +39 (0) 363 84086
Fax +39 (0)363 341636
Email info@elettromagneticservices.com

Issued: 30.01.06
Updated: 02.09.16